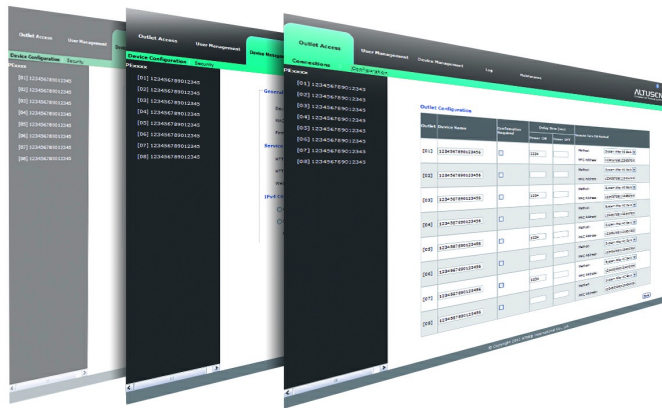


eco DC

Energy & DCIM Management Web GUI



The software has stopped providing RCI and RTI metrics due to ATEN's termination of the related licenses in 2020.

ATEN eco DC perfectly synergizes with ATEN Power Distribution Units (PDUs) to provide an efficient way to optimize users energy needs. Administrator's data center is equipped with real-time monitoring, measurements and EnPIs analysis that produce reports of power usage and PUE to meet the ISO 50001 requirements. With these critical indexes, users will receive customized reports about the energy usage of the data center as well as energy saving suggestions, which allow users to enhance energy usage and save energy without harming the IT equipment's reliability.

eco DC is the new Web-based GUI that allows users log in to manage and control PDUs through web browser. No additional install or setup needed. eco DC can run under any platform and OS. Users can easily manage the power consumption of the data center through intuitive interface and graphics.

eco DC is available in a Server and Client version. The Server version offers the full functionalities and is capable of managing the PDUs through SNMP and managing client nodes through TCP / IP. This allows multiple users to log in to the server node and manage PDUs in different authorized zones, making distributed PDU management much more efficient under one centralized environment. With the Client version, users can log in to a server node to monitor PDU status and control each outlet on the PDUs. Having the eco DC Server and Client version allows data centers to optimize their performance and centralize management with ease.

Features

- Automatic discovery of all PE and PG devices within the same intranet
- Remote real-time power measurement and monitoring
 - PDU level current / voltage / power dissipation / power consumption
 - Outlet ON / OFF / Recycle status
- Second window to monitor a data center's PUE, Power, Carbon Footprint and rack status
- Remote real-time power outlet management¹
 - Power outlet On / Off / Cycle switching by outlet or user-defined group
 - Power outlet On / Off / Cycle switching with pre-defined schedule
 - User-defined outlet level delays for sequential power up
 - Current / Voltage / Power Dissipation / Power Consumption threshold level settings
 - User access assignment for every outlet
 - Name assignment to individual outlets
- Remote real-time environmental sensor² monitoring
 - Temperature / Temperature + Humidity / Temperature + Differential Pressure readings
 - Temperature and Humidity threshold level settings
- Plotting / Monitoring of all PE and PG devices
 - Add data center server racks
 - Add PE and PG devices for each server rack
 - Manage device / device outlet status for each plot
- Offers essential data center indices including Rack Intake Temperature, Rack Exhaust Temperature, Rack Equipment Temperature Difference
- Power analysis report for optimizing data center energy management – including power usage, power load, power cost, CO2 cost, power capacity and trends
- Exceed threshold alert through SMTP and System log
- 1024 line event log
- System log provision
- Two-level password security
- Strong security features include password protection and advanced encryption technologies – 128 bit SSL
- Supports online UPS and SNMP Card
- Real-time status charts for Current / Voltage / Wattage remote monitoring

* Note:

1. Not all functions are supported by all PE and PG eco PDU models. Please contact your regional representative for more details.

2. EA series environmental sensors (except [EA1640](#) Temperature & Humidity Sensor) can only work with PG PDUs when being linked to the [EA1640](#) connected to PG PDUs.

Specifications

Max PDU number	3000
Data Center Layout	45 x 30
Max RACK Number	3000
Max Zone Number	128
Power Report Data	3 years
Real Time Dashboard Data	N/A

Diagram



ATEN International Co., Ltd.

3F., No.125, Sec. 2, Datong Rd., Sijhih District., New Taipei City 221, Taiwan
 Phone: 886-2-8692-6789 Fax: 886-2-8692-6767
 www.aten.com E-mail: marketing@aten.com



© Copyright 2015 ATEN® International Co., Ltd.
 ATEN and the ATEN logo are trademarks of ATEN International Co., Ltd.
 All rights reserved. All other trademarks are the property of their
 respective owners.